

**Pro-face**

by **Schneider Electric**

Touch Operator Interface

# GP4000 SERIES

*visibility*





## Enhanced Visibility

All models employ 65,535-color TFT LCDs with enhanced backlight brightness control. Crisp screens improve monitoring quality and safer operation.



## Mobile Remote Monitoring

Remotely monitor large-sized or long-distance applications, large process systems, or multiple machines on a manufacturing site on an easy-to carry iPhone, iPad, iPod touch, Android smartphone or Android tablet.



## Multiple Standards support a variety of Applications

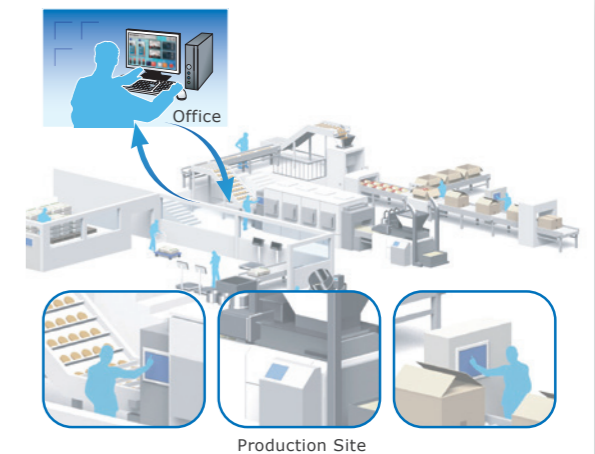
Coated components and compliance with a variety of international standards enable use in a diverse range of environments.



CCS Ship Classification is also supported.

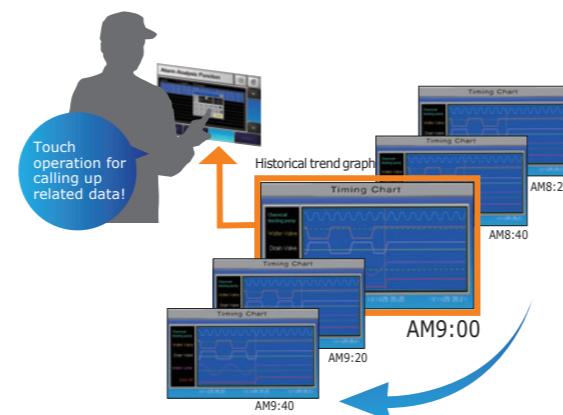
## Remote Data Collection and Management

A data management system, built with Pro-Server EX software for production quality and efficiency through HMI units installed on production machines can be simply and cost-efficiently built with standard PC software, such as Microsoft Office and SQL.



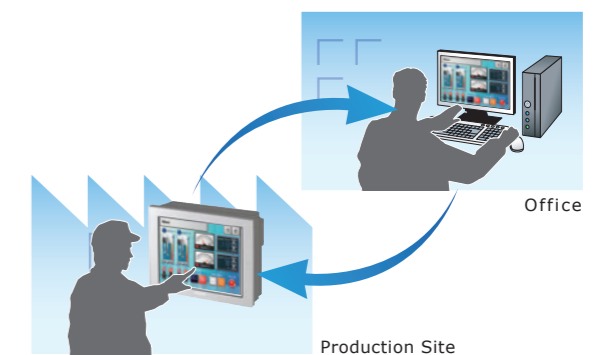
## Easy Troubleshooting






Alarm Analysis Function gives you timely understanding of error causes on site. With only a few clicks for configuration, you can set alarm analysis screens with logged status data of the alarm-related device.



## Remote Monitoring

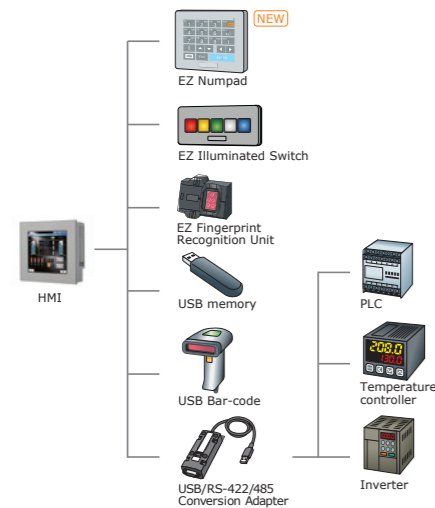
The Remote Monitoring software, GP-Viewer EX, allows you to monitor HMI screens installed on the production site from a Windows PC in a remote location.







|                            | 12.1" <small>AC 100-240V DC 24V</small><br>GP-4601T / GP-4603T (Isolated SIO model)          | 10.4" <small>AC 100-240V DC 24V</small><br>GP-4501T / GP-4503T (Isolated SIO model) | 7.5" <small>DC 24V</small><br>GP-4401T                                              | 5.7" <small>DC 24V</small><br>GP-4301T / GP-4303T (Isolated SIO model)                                    | 3.5" <small>DC 24V</small><br>GP-4201T / GP-4203T (Isolated COM SIO model)          |
|----------------------------|----------------------------------------------------------------------------------------------|-------------------------------------------------------------------------------------|-------------------------------------------------------------------------------------|-----------------------------------------------------------------------------------------------------------|-------------------------------------------------------------------------------------|
| Standard Model             |             |  |  |                        |  |
| Display (Resolution)       | 65,536-color TFT (SVGA 800 x 600 pixels)                                                     |                                                                                     | 65,536-color TFT (VGA 640 x 480 pixels)                                             |                                                                                                           | 65,536-color TFT (QVGA 320 x 240 pixels)                                            |
| Touch Panel Type           | Analog or Matrix (Support Two-Point Touch)                                                   |                                                                                     |                                                                                     | Analog                                                                                                    |                                                                                     |
| Memory                     | 32MB (Application), SRAM320KB (Backup for HMI), SRAM64KB (Backup for Control)                |                                                                                     |                                                                                     | 16MB (Application), SRAM320KB (Backup for HMI), SRAM64KB (Backup for Control)                             |                                                                                     |
| Ethernet                   | x1 (IEEE802.3i / IEEE802.3u, 10BASE-T/100BASE-TX)                                            |                                                                                     |                                                                                     | x1 (IEEE802.3i / IEEE802.3u, 10BASE-T/100BASE-TX)                                                         |                                                                                     |
| SIO                        | RS-232C×1, RS-422/485×1                                                                      |                                                                                     | RS-232C×1, RS-422/485×1                                                             |                                                                                                           | RS-232C/422/485×1                                                                   |
| SD Card Slot (Max. 32GB)   | x 1                                                                                          |                                                                                     | x 1                                                                                 |                                                                                                           | No                                                                                  |
| USB                        | USB Type-A (2.0) x 1, USB mini-B (2.0) x 1                                                   |                                                                                     | USB Type-A (2.0) x 1, USB mini-B (2.0) x 1                                          |                                                                                                           |                                                                                     |
| Replaceable Battery        | Yes                                                                                          |                                                                                     | Yes                                                                                 |                                                                                                           | No (Rechargeable battery)                                                           |
| Alarm Analysis DB Function | Yes                                                                                          |                                                                                     | Yes                                                                                 |                                                                                                           |                                                                                     |
| Other models               | Coated model: Yes / Color variation: Yes / Rear-mount model: Yes (Except GP-4603T, GP-4503T) |                                                                                     |                                                                                     | Coated model: Yes / Color variation: Yes / Rear-mount model: Yes (Except GP-4303T, GP-4201T and GP-4203T) |                                                                                     |

### Easily connect multiple USB devices

A controller with serial interface, EZ Series accessory unit, bar code reader, and USB flash drive can be easily connected to the HMI unit.\*



\* EZ Fingerprint Recognition Unit also requires power supply cable.  
\* Multiple devices of the same model cannot be connected.

|                            | 10.4" <small>DC 24V</small><br>GP-4501TW                                              | 7.0" wide <small>DC 24V</small><br>GP-4401WW                                          | 5.7" <small>DC 24V</small><br>GP-4301TW                                               | 3.5" <small>DC 24V</small><br>GP-4201TW                                               |
|----------------------------|---------------------------------------------------------------------------------------|---------------------------------------------------------------------------------------|---------------------------------------------------------------------------------------|---------------------------------------------------------------------------------------|
| W Model                    |  |  |  |  |
| Display (Resolution)       | 65,536-color TFT (VGA 640 x 480 pixels)                                               | 65,536-color TFT (WVGA 800 x 480 pixels)                                              | 65,536-color TFT (QVGA 320 x 240 pixels)                                              |                                                                                       |
| Touch Panel Type           | Analog                                                                                |                                                                                       | Analog                                                                                |                                                                                       |
| Memory                     | 16MB (Application), SRAM128KB (Backup for HMI)                                        | 16MB (Application), SRAM128KB (Backup for HMI)                                        | 8MB (Application), SRAM128KB (Backup for HMI)                                         |                                                                                       |
| Ethernet                   | x1 (IEEE802.3i / IEEE802.3u, 10BASE-T/100BASE-TX)                                     |                                                                                       | x1 (IEEE802.3i / IEEE802.3u, 10BASE-T/100BASE-TX)                                     |                                                                                       |
| SIO                        | RS-232C×1, RS-422/485×1                                                               |                                                                                       | RS-232C×1, RS-422/485×1                                                               |                                                                                       |
| SD Card Slot (Max. 32GB)   | x 1                                                                                   | x 1                                                                                   | No                                                                                    |                                                                                       |
| USB                        | USB Type-A (2.0) x 1, USB mini-B (2.0) x 1                                            |                                                                                       | USB Type-A (2.0) x 1, USB mini-B (2.0) x 1                                            |                                                                                       |
| Replaceable Battery        | Yes                                                                                   | Yes                                                                                   | No (Rechargeable battery)                                                             |                                                                                       |
| Alarm Analysis DB Function | No                                                                                    |                                                                                       | No                                                                                    |                                                                                       |
| Other models               | Coated model: Yes / Color variation: Yes                                              |                                                                                       | Coated model: Yes / Color variation: Yes                                              |                                                                                       |



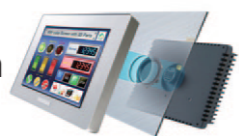
|                            | 5.7" DC 24V<br>GP-4301TM<br>Modular Type                     | 3.5" DC 24V<br>GP-4201TM<br>Modular Type | 4.3" DC 24V<br>GP-411*T<br>Compact Type  | 3.4" DC 24V<br>GP-410*<br>Compact Type |
|----------------------------|--------------------------------------------------------------|------------------------------------------|------------------------------------------|----------------------------------------|
| Display (Resolution)       | 65,536-color TFT (QVGA 320 x 240 pixels)                     |                                          | Color LCD (480 x 272 pixels)             | Monochrome LCD (200 x 80 pixels)       |
| Touch Panel Type           | Analog                                                       |                                          |                                          |                                        |
| Memory                     | 8MB(Application),nvSRAM128KB(Non-volatile,No Battery Needed) |                                          | 8MB(Application), FLASH EPROM 128KB *1*2 | 2.2MB(Application), EPROM128KB*1*2     |
| Ethernet                   | ×1 (IEEE802.3i / IEEE802.3u, 10BASE-T/100BASE-TX)            |                                          | ×1 (IEEE802.3u, 10BASE-T/100BASE-TX) *3  |                                        |
| SIO                        | RS-232C/422/485×1                                            |                                          | RS-232C/422/485×1*4                      |                                        |
| SD Card Slot               | No                                                           |                                          |                                          |                                        |
| USB                        | USB Type-A (2.0) ×1, USB mini-B (2.0) ×1                     |                                          |                                          |                                        |
| Replaceable Battery        | No                                                           |                                          |                                          |                                        |
| Alarm Analysis DB Function | No                                                           |                                          |                                          |                                        |
| Other models               | No                                                           |                                          |                                          |                                        |

\*1 Backup for HMI \*2 For supported features, please refer to GP-Pro EX Reference Manual. \*3 GP-4114T/4104 only \*4 Excluding GP-4114T/4104

### Modular Type HMI with Easy Installation

GP4000M Series

A separate installation cable is under development.



### Compact HMI with Full-graphic Display

GP4100 Series



## The Perfect Visualization Solution for every need.

### Rear-mounting HMI, Integrates into Machine Design

GP4000 Series Rear-mount Model



|      |       |       |      |      |
|------|-------|-------|------|------|
| Size | 12.1" | 10.4" | 7.5" | 5.7" |
|------|-------|-------|------|------|

GP4000 Series Rear-mount Models are DC power and analog touch panel models only.

### Corrosion-resistant Board Coating for Environmental Requirement

All GP4000 Series products are available in coated models. (Except GP4100 Series and GP4000M Series)

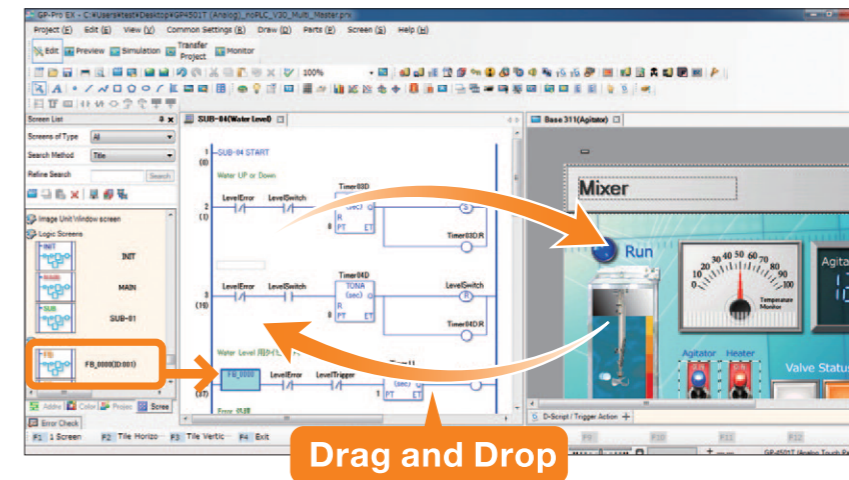
### Compatibility with Equipment Design or Customer Corporate Brand

GP4000 Series Color Variation



Easy sharing of symbolized device data between HMI screen and control programs using drag and drop operation provides you with intuitive operation throughout the successful completion of a project.

Function Block control programming also eases your control system design with frequently used and specially defined control functions.



Drag and Drop

## GP-Pro EX Ver. 3.1 New Features

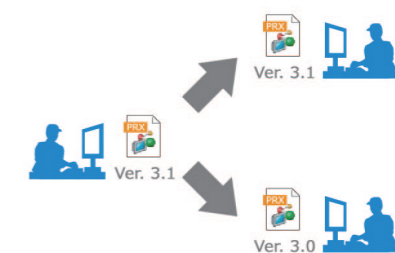
### Quickly understand detailed differences between similar project files

Project Comparison Tool allows easy yet detailed comparison of two screen-project files for updating and modifying customer applications. Differences for each part attribute, alarm message, or setup item are displayed.

| Screen B1 |         | A         | B         |
|-----------|---------|-----------|-----------|
| Parts 1   | Address | X0001     | X0002     |
|           | Shape   | Circle    | Square    |
|           | Action  | Momentary | Alternate |
|           | Label   | Run       | Run       |
|           |         |           |           |

### Multi-version File Format Support for Screen Project Files

Screen project files edited in version 3.1 of GP-Pro EX can also be saved in version 3.0 format to facilitate screen data handling among personnel with different responsibilities such as testing engineers, factory installation technicians, and maintenance engineers.



### More New Features

- Change password during on-line operation
- Extended text search and replacement
- Range Setting on Word Switch
- Selectable SRAM Back-up Data Modes for Screen Data Transfer



# Pro-face

by Schneider Electric

All *eyes* on the customer make us "the best interface"

*i*ntimacy

Connect intimately with our customers and stakeholders

*i*nnovation

Provide benefits to our customers through innovation

*i*nteraction

Enhance customer experience through positive interaction

## ⚠ WARNING

### HAZARD OF OPERATOR INJURY, OR UNINTENDED EQUIPMENT DAMAGE

Before operating any of these products, be sure to read all related manuals thoroughly.

**Failure to follow these instructions can result in death, serious injury or unintended equipment damage.**

- For printing purposes, the colors in this catalog may differ from those of the actual unit.
- Actual user screens may differ from the screens shown here.
- Electric equipment should be installed, operated, serviced, and maintained only by qualified personnel. No responsibility is assumed by Digital for any consequences arising out of the use of this material.
- All product names used in this catalog are the registered trademarks or trademarks of their respective companies.
- All information contained in this catalog is subject to change without notice.

|                                                                                                                                                                                                        |                                                                                                                                                                                                                      |                                                                                                                                                                                |                                                                                                                                                                                 |                                                                                                                                                                        |                                                                                                                                                                          |
|--------------------------------------------------------------------------------------------------------------------------------------------------------------------------------------------------------|----------------------------------------------------------------------------------------------------------------------------------------------------------------------------------------------------------------------|--------------------------------------------------------------------------------------------------------------------------------------------------------------------------------|---------------------------------------------------------------------------------------------------------------------------------------------------------------------------------|------------------------------------------------------------------------------------------------------------------------------------------------------------------------|--------------------------------------------------------------------------------------------------------------------------------------------------------------------------|
| <b>Global Headquarters</b><br>Digital Electronics Corporation<br>Osaka, JAPAN<br>Tel: +81 (0)6 6208-3133<br>Fax: +81 (0)6 6208-3136<br>www.pro-face.com<br>info@pro-face.com                           | <b>Indonesia</b><br>Pro-face Indonesia<br>Ventura Building - 7th Floor, Jl. RA Kartini Kav.26,<br>Cilandak, Jakarta Selatan 12430 Indonesia<br>Tel / Fax: +62 21 750 4496<br>www.proface.co.id<br>info@proface.co.id | <b>South Korea</b><br>Pro-face Korea Co., Ltd.<br>Seoul, SOUTH KOREA<br>Tel: +82 (0)2 2630 9850<br>Fax: +82 (0)2 2630 9860<br>www.proface.co.kr<br>proface@proface.co.kr       | <b>European Headquarters</b><br>Pro-face Europe B.V.<br>Hoofddorp, THE NETHERLANDS<br>Tel: +31 (0)23 55 44 099<br>Fax: +31 (0)23 55 44 090<br>www.proface.eu<br>info@proface.eu | <b>Italy</b><br>Pro-face Italia S.p.a.<br>Bovisio Masciago (Milano), ITALY<br>Tel: +39 (0)362 59 96 1<br>Fax: +39 (0)362 59 96 69<br>www.proface.it<br>info@proface.it | <b>Spain and Portugal</b><br>Pro-face España<br>Cardedeu (Barcelona), SPAIN<br>Tel: +34 (0)93 846 07 45<br>Fax: +34 (0)93 845 48 68<br>www.proface.es<br>info@proface.es |
| <b>Australia and New Zealand</b><br>Pro-face Australia<br>Mt. Waverley, AUSTRALIA<br>Tel: +61 (0)3 9550 7396<br>Fax: +61 (0)3 9550 7390<br>www.pro-face.com.au www.pro-face.co.nz<br>pfau@pro-face.com | <b>North America</b><br>Pro-face America, Inc.<br>Ann Arbor, MI U.S.A<br>Tel: +1 734 477 0600<br>Fax: +1 734 864 7347<br>www.profaceamerica.com<br>info@profaceamerica.com                                           | <b>Taiwan</b><br>Pro-face Taiwan<br>Taipei, TAIWAN<br>Tel: +886 (0)2 2657 1121<br>Fax: +886 (0)2 2657 1021<br>www.proface.com.tw<br>proface@proface.com.tw                     | <b>Austria</b><br>Pro-face Europe B.V.(Austria Office)<br>Hagenberg, AUSTRIA<br>Tel: +43 7236 3343 620<br>FAX: +43 7236 3343 629<br>www.proface.at<br>info@proface.at           | <b>Denmark</b><br>Pro-face Northern Europe ApS<br>Roskilde, DENMARK<br>Tel: +45 70 22 01 22<br>Fax: +45 70 22 01 33<br>www.proface.dk<br>info@proface.dk               | <b>Sweden</b><br>Pro-face Sweden AB<br>Löddeköpinge (Malmö), SWEDEN<br>Tel: +46 46 540 90 70<br>Fax: +46 46 71 27 90<br>www.proface.se<br>info@proface.se                |
| <b>China</b><br>Pro-face China International Trading Co., Ltd.<br>Shanghai, P. R. CHINA<br>Tel: +86 (0)21 6361 5175<br>Fax: +86 (0)21 6361 5176<br>www.proface.com.cn<br>proface@proface.com.cn        | <b>Singapore</b><br>Pro-face Singapore<br>TechPoint, Singapore<br>Tel: +65-6832-5533<br>Fax: +65-6415-1605<br>www.proface.sg<br>info@proface.sg                                                                      | <b>Germany</b><br>Pro-face Deutschland GmbH<br>Solingen, GERMANY<br>Tel: +49 (0)212 258 260<br>Fax: +49 (0)212 258 2640<br>www.proface.de<br>info@pro-face.de                  | <b>France</b><br>Pro-face France S.A.S.<br>Mity-Mory, FRANCE<br>Tel: +33 (0)1 60 21 22 91<br>Fax: +33 (0)1 60 21 22 92<br>www.proface.fr<br>info@proface.fr                     | <b>Poland</b><br>Pro-face Europe B.V.(Warsaw Office)<br>Warszawa, POLAND<br>Tel: +48 (22) 465 66 62<br>Fax: +48 (22) 465 66 67<br>www.proface.pl<br>info@proface.pl    | <b>Switzerland</b><br>Pro-face Schweiz GmbH<br>Regensdorf, SWITZERLAND<br>Tel: +41 (0)43 343 7272<br>Fax: +41 (0)43 343 7279<br>www.proface.ch<br>info@proface.ch        |
| <b>India</b><br>Pro-face India<br>Bangalore, INDIA<br>Tel: +91 80 4333 3540/3541<br>Fax: +91 80 4333 3222<br>www.proface.co.in<br>sales.proface@proface.co.in                                          | <b>South-East Asia Pacific</b><br>Pro-face South-East Asia Pacific Co.,Ltd.<br>Bangkok, THAILAND<br>Tel: +66 (0)2 617 5678<br>Fax: +66 (0)2 617 5688<br>www.proface.co.th<br>pfsales@proface.co.th                   | <b>Russia</b><br>Pro-face Europe B.V. (Russia Office)<br>Saint-Petersburg, RUSSIA<br>Tel: +7 (812) 336 47 06<br>Fax: +7 (812) 336 47 18<br>www.pro-face.ru<br>info@pro-face.ru | <b>United Kingdom</b><br>Pro-face UK Ltd<br>Coventry, ENGLAND<br>Tel: +44 (0)2476 511288<br>Fax: +44 (0)2476 511499<br>www.proface.co.uk<br>info@proface.co.uk                  |                                                                                                                                                                        |                                                                                                                                                                          |

**SCIGATE**  
Your Automation Partner



**SCIGATE AUTOMATION (S) PTE LTD**

No.1 Bukit Batok Street 22 #01-01 Singapore 659592

Tel: (65) 6561 0488

Fax: (65) 6562 0588

Email: sales@scigate.com.sg

Web: www.scigate.com.sg

Business Hours: Monday - Friday 8.30am - 6.15pm