

**Pro-face**  
for the best interface

# Industrial PC Flat Panel Monitor

Industrial Panel / Built-in PC

**PS4000 Series**

Industrial Built-in PC

**PE4000B Series**

Flat Panel Monitor

**FP5000 Series**



## Industrial PC

### ■ PS4000 Series

The PS4000 Series offers extensive connectivity, high performance, energy efficient processor options, and quick and easy storage expansion.

Type	19", 15", 12" or Built-in
CPU	Core™ 2 Duo P8400 or Atom™ N270
RAM	2 to 8GB (Core™ 2 Duo) or 1 to 3GB
Supported OS	Windows XP, Windows 7, WES2009 or WES7
Storage	CF, HDD or SSD



### ■ PE4000B Series

The highly compact PE4000B is the entry level product to Pro-face Industrial PC quality and performance.

Type	Built-in
CPU	Atom™ N2600, N270
RAM	2GB or 4GB
Supported OS	WES2009, WES7



## Industrial Flat Panel Monitor

### ■ FP5000 Series

Supporting the trend for more efficient operation, an analog resistive multi touch panel and automatic brightness adjustment has been added to the FP5000 Series thus supporting convenient operation in industrial environments.

Type	15" or 12"
Supported OS	Windows XP, Windows 7, Windows 8.1, WES2009 or WES7
Video Input	DVI-D



## Software

**Pro-face Remote HMI**  
Remote Monitoring Software for mobile

Monitors and controls HMI screens on a smartphone or a tablet. Pro-face Remote HMI Server is the software to operate Windows app. via the Pro-face Remote HMI.

**Pro-Server EX**  
Data Management Software

Provides data connectivity and reporting functionality.

**WinGP**  
HMI Runtime Engine for PC

Runs screen data created for Pro-face HMI on GP-Pro EX software on a Windows PC.

## Application

### Enterprise Network

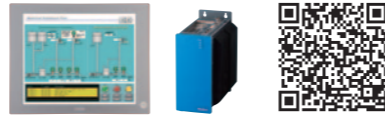


For detailed specifications, visit our website.  
<http://www.pro-face.com/product/soft/index.html>



## PS4000 Series

Choose the suitable CPU, OS & storage to meet your requirements.



### Dependability

#### ■ Disk-less System for Secure Operation

SSD, CFast\*\*1 or CF Card with Embedded OS provides stable operation even in locations subject to vibration or shock.

\*\* PS-4600 only



For longer CF Card life, we recommend saving log data to another storage device.

(Image of PS-4700 Embedded model)

#### ■ Increased Parts Life Time

A large-size heat sink and intelligent fan control reduce load on the components.\*

\* Fan-less models with extended maintenance cycle and low energy consumption.



(Image of PS4800 or PS4700 Model)

#### ■ For Sites Where Uninterrupted PC Operation is Required

All models can be used continuously for 24 hours including those equipped with a hard disk drive.

#### ■ For Stable OS Shutdown Anywhere

UPS (Uninterruptible Power Supply) is available.



(Image of PS4800 or PS4700 Model)

### Reassurance

#### ■ Operating System with Long-Term Supply

A licensing agreement with Microsoft allows us to provide a long-term supply of the product. Windows® XP Professional embedded can be also supplied by 31 Dec. 2016.

#### ■ Fan-less Model with Lower Operating Noise

The PS-4600 units without HDD do support fan-less operation. All PS4000 Series with Atom™ CPU don't require a fan as well.

### Maintainability

#### ■ Easily Replaceable HDD Drive

The cartridge type HDD/SSD allows easy replacement.



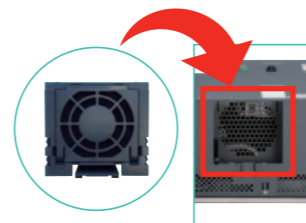
Sliding expansion Slot (Slide-in Slot)

HDD/SSD Slot (Slide-in Disk)

(Image of PS4800 or PS4700 Model)

#### ■ Easily Replaceable Fan

A fan kit is provided as a maintenance product to enable easy replacement by the customer.



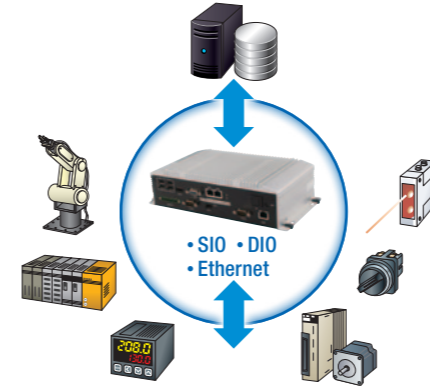
## PE4000B Series

Highly compact IPC empowering your applications



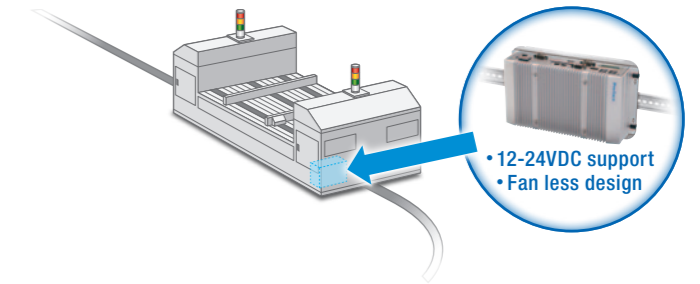
#### ■ Various interfaces for transparent production processes

COM×6 (max.), Ethernet×3 (max.), USB×5 (max.), 8 points (selectable I/O). Connect to multiple devices at a time.



#### ■ Compact size and low power consumption

Highly compact design and mountable via DIN rail or directly. Freedom of product placement and convenient installation.



## FP5000 Series

Industrial display supporting latest operation concepts



#### ■ Benefit from latest multi-touch operation support

The FP5000 series supports touchscreen gestures, so the operator can perform operations like changing screens and zooming in as if using a smartphone or tablet.



#### ■ Improve operation efficiency by simply upgrading your displays

The FP5000 series shares the same panel cutout dimensions as the FP3000 series, making replacement simple.



15"	FP-3700T	→	15"	FP-5700TPD
12"	FP-3600T	→	12"	FP-5600TPD
10"	FP-3500T			

## USB Solution: EZ Series

Expand functions with a single USB Cable



#### ■ Supports the convenient EZ Series option, which allows simple expansion of functionality

The single cable architecture further reduces installation time and eases installation at any location.



# Industrial PC and Industrial Flat Panel Monitor Line up

	PS-4800	PS-4700	PS-4700 (Embedded model)	PS-4600	PS-4000B
<b>Image</b>					
<b>Bezel</b>	Aluminum Bezel	Aluminum Bezel Stainless Steel Bezel	Aluminum Bezel Stainless Steel Bezel	Aluminum Bezel No bezel (Rear-mount)	
<b>Display</b>	19" SXGA (1,280 x 1,024)	15" XGA (1,024 x 768)	15" XGA (1,024 x 768)	12" XGA (1,024 x 768)	—
<b>Expansion Slot</b>	2 slots* <sup>1</sup> 1 slot* <sup>2</sup> 0 slot		0 slot	2 slots* <sup>3</sup> 1 slot* <sup>4</sup> 0 slot	5 slots* <sup>5</sup> 2 slots* <sup>1</sup> 1 slot* <sup>2</sup>
<b>CPU</b>	Core™ 2 Duo P8400 2.26GHz Atom™ N270 1.6GHz	Atom™ Z510 1.1GHz	Atom™ Z510 1.1GHz	Core™ i3-3217UE 1.60GHz Celeron™ 827E 1.40GHz	Core™ 2 Duo P8400 2.26GHz Atom™ N270 1.6GHz
<b>Power Supply</b>	AC 100-240V DC 24V* <sup>6</sup>	DC 24V* <sup>6</sup>	DC 24V* <sup>6</sup>	AC 100-240V DC 24V	DC 24V* <sup>6</sup>
<b>RAM</b>	2 to 8GB* <sup>7</sup> (Core™ 2 Duo P8400) 1 to 3GB (Atom™ N270)	1 to 2GB	1 to 2GB	1 to 16GB* <sup>7</sup>	2 to 8GB* <sup>7</sup> (Core™ 2 Duo P8400) 1 to 3GB (Atom™ N270)
<b>Windows® OS</b>	Embedded Standard 2009 (32bit), Embedded Standard 7 Premium (32bit), XP Professional (32bit) or 7 Ultimate (32/64bit)	Embedded Standard 2009 (32bit)	Embedded Standard 2009 (32bit)	Embedded Standard 2009 (32bit), Embedded Standard 7 Premium (32bit), XP Professional (32bit) or 7 Ultimate (32/64bit)	Embedded Standard 2009 (32bit), Embedded Standard 7 Premium (32bit), XP Professional (32bit) or 7 Ultimate (32/64bit)
<b>Storage</b>	CF : 4GB or 8GB* <sup>8</sup> HDD : 500GB SSD : 60GB	CF : 4GB* <sup>8</sup>	CF : 4GB* <sup>8</sup>	CFast : 4GB or 8GB* <sup>8</sup> HDD : 500GB SSD : 60GB or 128GB	CF : 4GB or 8GB* <sup>8</sup> HDD : 500GB SSD : 60GB
<b>Interface</b>	COM: 2 LAN: 2 CF: 1 CFast: — Video: DVI-I x 1 USB: 5 Others: —	COM: 2 LAN: 2 CF: 1 CFast: — Video: DVI-I x 1 USB: 5 (4)* <sup>9</sup> Others: —	COM: 1 LAN: 1 CF: 1 CFast: — Video: — USB: 3 (2)* <sup>9</sup> Others: —	COM: 2 LAN: 2 CF: — CFast: 1 Video: DVI-I x 1 USB: 5 (4)* <sup>9</sup> Others: —	COM: 2 LAN: 2 CF: 1 CFast: — Video: DVI-I x 1 USB: 5 Others: —
<b>Expansion Option</b>	DVD Multi drive HDD SSD			DVD Multi drive HDD SSD	DVD Multi drive HDD SSD
<b>I/F Port</b>	RS-232C/422/485 UPS		Ethernet	RS-232C/422/485 UPS	RS-232C/422/485 DVI-D UPS
<b>Surrounding Air Temperature</b>	0 to 50°C (32 to 122°F)				

\*: Expandable by adding option.  
<sup>1</sup>: "PCI x1 and PCIe (x4) x1" or "PCI x2" <sup>2</sup>: "PCI x1" <sup>3</sup>: "PCI x1 and PCIe(x8) x1" or "PCI x2" <sup>4</sup>: "PCI x1" or "PCIe(x8) x1" <sup>5</sup>: 5 slots is available when choosing Core™ 2 Duo P8400 only.  
<sup>6</sup>: Special power supply is available for conformance to marine vessel standards or for the use of UPS. <sup>7</sup>: More than 6GB memory is available when choosing 64-bit OS.  
<sup>8</sup>: CF Card and CFast are Embedded OS only. <sup>9</sup>: Stainless Steel Bezel Models and Rear-mount Models have no front USB interface.

The BTO allows you to select your desired PC and customize it in detail.\*  
 \* Please note that some patterns cannot be selected depending on the model or combination. Confirm your selection with the BTO sheet on the Pro-face web site.

	PE-4000B (Atom™ N2600 Model)	PE-4000B (Atom™ N270 Model)	FP-5700TPD	FP-5600TPD
<b>Image</b>				
<b>Display</b>	—		15" XGA (1,024 x 768)	12" XGA (1,024 x 768)
<b>Expansion Slot</b>	1 slot* <sup>10</sup>	1 slot* <sup>11</sup>	16 million Colors	
<b>CPU</b>	Atom™ Dual Core N2600 1.6GHz	Atom™ N270 1.6GHz	White LED* <sup>12</sup>	
<b>Power Supply</b>	DC 12-24V	DC 9-36V	DC 12-24V	
<b>RAM</b>	2GB or 4GB (DDR3 800 MHz)	2GB (DDR2 533 MHz)	—	
<b>Windows® OS</b>	Embedded Standard 2009 (32bit) Embedded Standard 7 (32bit)	Embedded Standard 2009 (32bit)	Windows®XP, Windows®7, WES7, Windows®8.1, WES8	
<b>Storage</b>	CFast : 16GB, 8GB CF : 8GB SSD : 80GB	CF : 8GB	Panel mount or 75mm VESA mount	
<b>Interface</b>	COM: 6 LAN: 3 CF: 2 CFast: 1 Video: Analog RGB x 1, HDMI x 1 USB: 5 Others: Digital I/O x 8	COM: 2 LAN: 1 CF: 1 CFast: — Video: Analog RGB x 1 USB: 2 Others: PS2 x 1	COM: — LAN: — CF: — CFast: — Video: DVI-D USB: 1 Others: —	COM: — LAN: — CF: — CFast: — Video: DVI-D USB: 1 Others: —
<b>Expansion Option</b>	—		—	
<b>I/F Port</b>	—		—	
<b>Surrounding Air Temperature</b>	0 to 60°C (32 to 140°F) with airflow	0 to 70°C (32 to 150°F)	0 to 60°C (32 to 140°F)	

\*<sup>10</sup>: Mini PCIe (full size) \*<sup>11</sup>: Mini PCIe (half size) \*<sup>12</sup>: Not user replaceable. When replacement is required, contact your local distributor.

# Pro-face

for the best interface

We are always striving to bring you the high quality interface designed to provide a cohesive, evolving connection between customers and high quality products, service and support from around the world.

All *i*eyes on the customer make us "the best interface"

*i*ntimacy

Connect intimately with our customers and stakeholders

*i*nteraction

Enhance customer experience through positive interaction

*i*nnovation

Provide benefits to our customers through innovation

## ⚠ WARNING

### HAZARD OF OPERATOR INJURY, OR UNINTENDED EQUIPMENT DAMAGE

Before operating any of these products, be sure to read all related manuals thoroughly.

**Failure to follow these instructions can result in death, serious injury, or equipment damage.**

- For printing purposes, the colors in this catalog may differ from those of the actual unit.
- All product names used in this catalog are the registered trademarks or trademarks of their respective companies.
- Actual user screens may differ from the screens shown here.
- All information contained in this catalog is subject to change without notice.
- Electrical equipment should be installed, operated, serviced, and maintained only by qualified personnel. No responsibility is assumed by Digital for any consequences arising out of the use of this material.

<p><b>Global Headquarters</b> Digital Electronics Corporation Osaka, JAPAN Tel: +81 (0)6 6208-3133 Fax: +81 (0)6 6208-3136 www.pro-face.com info@pro-face.com</p>	<p><b>Indonesia</b> Pro-face Indonesia Ventura Building - 7th Floor, Jl. RA Kartini Kav.26, Cilandak, Jakarta Selatan 12430 Indonesia Tel / Fax: +62 21 750 4496 www.proface.co.id info@proface.co.id</p>	<p><b>South Korea</b> Pro-face Korea Co., Ltd. Seoul, SOUTH KOREA Tel: +82 (0)2 2630 9850 Fax: +82 (0)2 2630 9860 www.proface.co.kr proface@proface.co.kr</p>	<p><b>European Headquarters</b> Pro-face Europe B.V. Hoofddorp, THE NETHERLANDS Tel: +31 (0)23 55 44 099 Fax: +31 (0)23 55 44 090 www.proface.eu info@proface.eu</p>	<p><b>Italy</b> Pro-face Italia S.p.a. Bovisio Masciago (Milano), ITALY Tel: +39 (0)362 59 96 1 Fax: +39 (0)362 59 96 69 www.proface.it info@proface.it</p>	<p><b>Spain and Portugal</b> Pro-face España Cardedeu (Barcelona), SPAIN Tel: +34 (0)93 846 07 45 Fax: +34 (0)93 845 48 68 www.proface.es info@proface.es</p>
<p><b>Australia and New Zealand</b> Pro-face Australia Mt. Waverley, AUSTRALIA Tel: +61 (0)3 9550 7396 Fax: +61 (0)3 9550 7390 www.pro-face.com.au www.pro-face.co.nz pfau@pro-face.com</p>	<p><b>North America</b> Pro-face America, Inc. Ann Arbor, MI U.S.A Tel: +1 734 477 0600 Fax: +1 734 864 7347 www.profaceamerica.com info@profaceamerica.com</p>	<p><b>Taiwan</b> Pro-face Taiwan Taipei, TAIWAN Tel: +886 (0)2 2657 1121 Fax: +886 (0)2 2657 1021 www.proface.com.tw proface@proface.com.tw</p>	<p><b>Austria</b> Pro-face Europe B.V.(Austria Office) Hagenberg, AUSTRIA Tel: +43 7236 3343 620 FAX: +43 7236 3343 629 www.proface.at info@proface.at</p>	<p><b>Denmark</b> Pro-face Northern Europe ApS Roskilde, DENMARK Tel: +45 70 22 01 22 Fax: +45 70 22 01 33 www.proface.dk info@proface.dk</p>	<p><b>Sweden</b> Pro-face Sweden AB Löddeköpinge (Malmö), SWEDEN Tel: +46 46 540 90 70 Fax: +46 46 71 27 90 www.proface.se info@proface.se</p>
<p><b>China</b> Pro-face China International Trading Co., Ltd. Shanghai, P. R. CHINA Tel: +86 (0)21 6361 5175 Fax: +86 (0)21 6361 5176 www.proface.com.cn proface@proface.com.cn</p>	<p><b>Singapore</b> Pro-face Singapore TechPoint, Singapore Tel: +65-6832-5533 Fax: +65-6415-1605 www.proface.sg info@proface.sg</p>		<p><b>France</b> Pro-face France S.A.S. Mity-Mory, FRANCE Tel: +33 (0)1 60 21 22 91 Fax: +33 (0)1 60 21 22 92 www.proface.fr info@proface.fr</p>	<p><b>Poland</b> Pro-face Europe B.V.(Warsaw Office) Warszawa, POLAND Tel: +48 (22) 465 66 62 Fax: +48 (22) 465 66 67 www.proface.pl info@proface.pl</p>	<p><b>Switzerland</b> Pro-face Schweiz GmbH Regensdorf, SWITZERLAND Tel: +41 (0)43 343 7272 Fax: +41 (0)43 343 7279 www.proface.ch info@proface.ch</p>
<p><b>India</b> Pro-face India Bangalore, INDIA Tel: +91 80 4333 3540/3541 Fax: +91 80 4333 3222 www.proface.co.in sales.proface@proface.co.in</p>	<p><b>South-East Asia Pacific</b> Pro-face South-East Asia Pacific Co.,Ltd. Bangkok, THAILAND Tel: +66 (0)2 617 5678 Fax: +66 (0)2 617 5688 www.proface.co.th pfsales@proface.co.th</p>		<p><b>Germany</b> Pro-face Deutschland GmbH Solingen, GERMANY Tel: +49 (0)212 258 260 Fax: +49 (0)212 258 2640 www.proface.de info@pro-face.de</p>	<p><b>Russia</b> Pro-face Europe B.V. (Russia Office) Saint-Petersburg, RUSSIA Tel: +7 (812) 336 47 06 Fax: +7 (812) 336 47 18 www.pro-face.ru info@pro-face.ru</p>	<p><b>United Kingdom</b> Pro-face UK Ltd Coventry, ENGLAND Tel: +44 (0)2476 511288 Fax: +44 (0)2476 511499 www.proface.co.uk info@proface.co.uk</p>



### SCIGATE AUTOMATION (S) PTE LTD

No.1 Bukit Batok Street 22 #01-01 Singapore 659592

Tel: (65) 6561 0488

Fax: (65) 6562 0588

Email: sales@scigate.com.sg

Web: www.scigate.com.sg

Business Hours: Monday - Friday 8.30am - 6.15pm