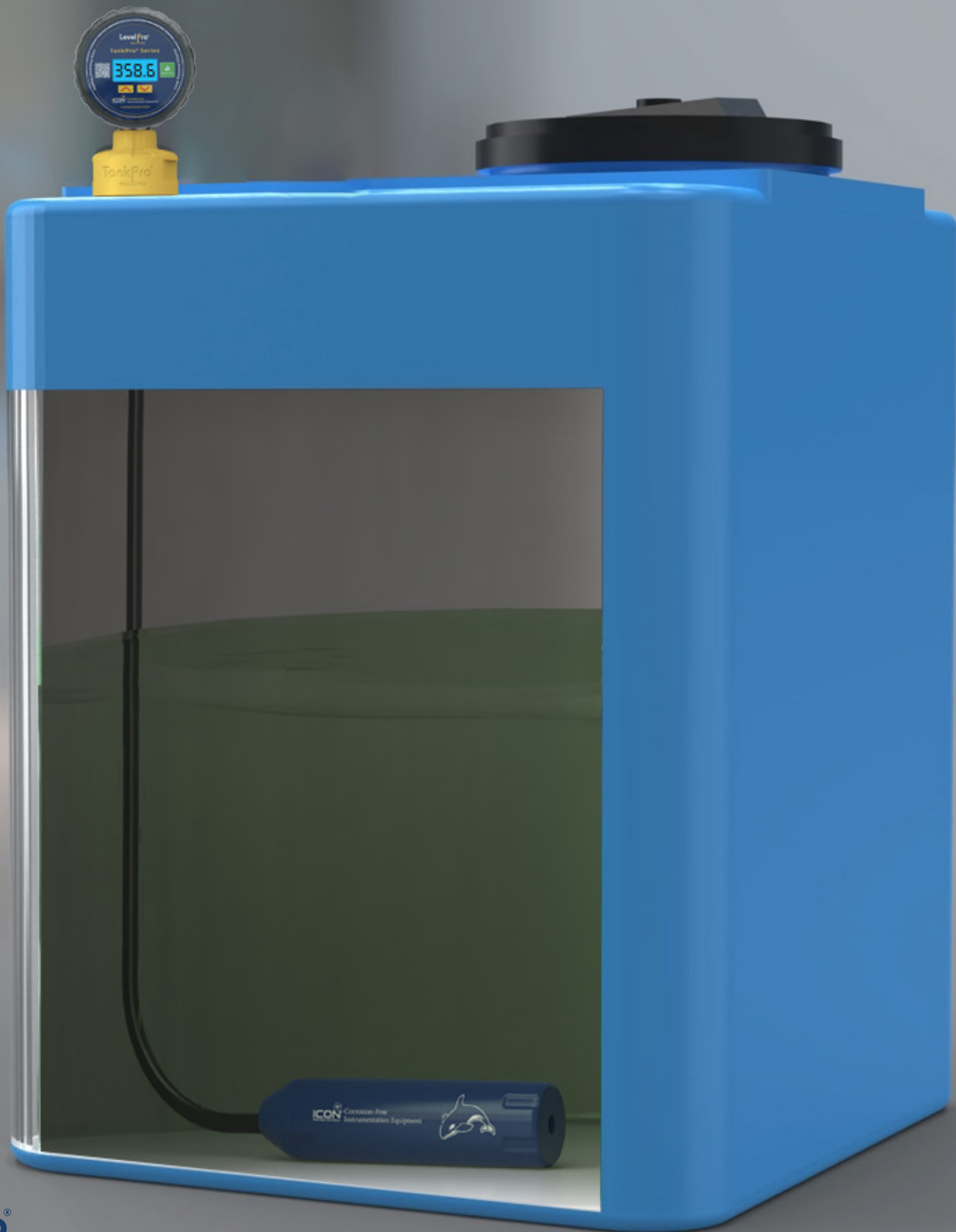


**LevelPro® — TankPro® Series**  
**Submersible Level Sensor Transmitter**

**ICON™** Corrosion-Free  
PROCESS CONTROLS Instrumentation Equipment™



# LevelPro® — TankPro® Series

## Submersible Level Sensor Transmitter

**ICON**™ Corrosion-Free  
PROCESS CONTROLS Instrumentation Equipment™



### Features

- ✓ Higher Accuracy:  $\pm 0.5\%$
- ✓ Superior Chemical/Corrosion Resistance
- ✓ PVC | PP | PVDF | 316 SS | PTFE Teflon®
- ✓ Teflon® Jacketed Cable
- ✓ Kalrez® O-Ring Seal
- ✓ 14ft Measuring Range
- ✓ 4-20mA Loop Powered
- ✓ Works on Foam | Vapor | Turbulence | Condensate
- ✓ Integrally Molded Internal Weight | No Floating
- ✓ IP68 | NEMA 4X Enclosure

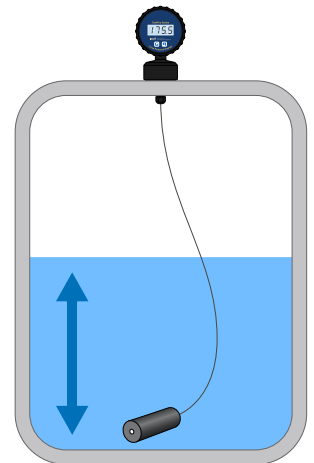
### The Solution to Tough Applications Where Ultrasonic Sensors Simply DO NOT WORK!

The TankPro® Submersible Level Transmitter provides continuous level measurement for both corrosive and non-corrosive liquids. These submersible hydrostatic transmitters have been designed for the toughest industrial applications. Unlike ultrasonic level transmitters, our liquid level sensors are completely unaffected by any foam, vapor, turbulence or condensate in the tank.

The TankPro® Level Transmitter comes equipped with a local LCD display that mounts the top of the tank with a 1" or 2" NPT connection.

The TankPro® Series comes in PVC, PP, PVDF, PTFE Teflon® or 316 SS making them the perfect level sensor for your chemical tank application.

Accurate level reading by measuring the head pressure of the liquid pushing down on ceramic sensing diaphragm.



### VaporBloc® Technology

- ✓ Blocks Out Corrosive Chemical Fumes
- ✓ Pressure Tested to 75 Psi
- ✓ Protects Internal Wiring Connections



# LevelPro® — TankPro® Series

## Submersible Level Sensor Transmitter

### Technical Specifications

Input Pressure Range	
Level ft/H <sub>2</sub> O	14 *Consult Factory for Levels > 14 ft
Overpressure   Psi	210   290   290   380
Output Signal   Supply	
Output Signal	4-20mA
Power Supply	9-36 VDC   Loop Powered
Performance	
Accuracy	<±0.5% Full Scale
Permissible Load	$R_{max} = [(V_s - V_{smin}) / 0.02 A] \Omega$
Influence Effects	Supply: 0.05% Full Scale/10V   Load: 0.05% Full Scale/K $\Omega$
Long Term Stability	<± 0.1% Full Scale over One Year
Response Time	<10 msec
Permissible Temperatures	
Storage/Media Temperatures	<div>PVC : 32 to 140°F 0 to 60°C</div> <div>PP : -20 to 170°F -28 to 76°C</div> <div>PVDF : -40 to 170°F -40 to 76°C</div> <div>PTFE : -40 to 170°F -40 to 76°C</div> <div>316 SS : -40 to 170°F -40 to 76°C</div>
Thermal Effects   Offset & Span	
Thermal Drift	<± 0.02% FSO/K in Compensated Range   -20 to 170°F
Display	
LCD	
Materials   Wetted	
Housing	PVC   PP   PVDF   PTFE   316 SS
Seal	FFKM - Kalrez®
Diaphragm	Pure Ceramic 96% Al <sub>2</sub> O <sub>3</sub>   316 SS
Electrical Protection	
Short-Circuit Protection	Permanent
Reverse Polarity Protection	No Damage to Sensor
Electromagnetic Compatibility	Emission Immunity According to EN 61326
Electrical Connection	
Jacketed Cable	PTFE Teflon®   -40 to 200°F
3-Wire Cable with Integrated Air Tube for Reference to Atmospheric Pressure	
General (Sensor Only)	
Current Consumption	Max. 25mA
Weight   Grams	PVC : 575g   PP : 475g   PVDF : 825g   PTFE : 875g   316 SS : 875g
Ingress Protection	IP 68   NEMA 4X
CE-Conformity	EMC Directive: 2004   108   EC
Standards & Approvals	
CE   FCC   RoHS Compliant	

\*Contact Factory for different options

### Model Selection

TankPro® — Submersible Level Sensor + Display		
Part Number	Material	Output
191-1001-A113302F	PVC	1 Relay + 4-20mA
191-1001-B113302F	PP	1 Relay + 4-20mA
191-1001-E113302F	PVDF	1 Relay + 4-20mA
191-1001-SS113302F	316 SS	1 Relay + 4-20mA

### Wiring

24VDC	Color
Supply +	Red
Supply -	Black

